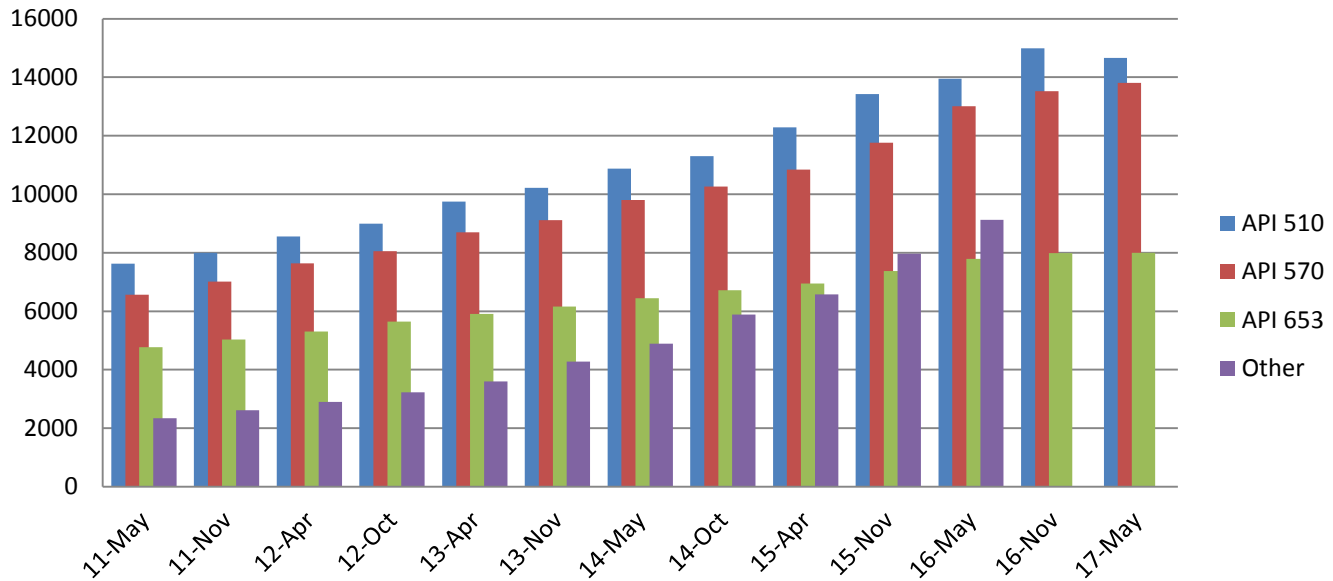

Individual Certification Programs Status Update

Breakdown as of
04/31/2017

Andri Orphanides



Growth of Certificates by Program



Program	April 2012	Oct. 2012	April 2013	Nov. 2013	May 2014	Oct. 2014	April 2015	Nov. 2015	May 2016	Nov. 2016	May 2017
API 510	8556	8994	9746	10221	10871	11300	12290	13424	13946	14992	14663
API 570	7639	8052	8695	9116	9806	10259	10840	11767	13009	13519	13805
API 653	5304	5647	5905	6162	6440	6713	6945	7374	7787	7986	7996
API 936	706	784	901	964	1051	1173	1232	1326	1409	1533	1551
TES	518	572	609	631	629	626	658	678	673	680	649
API 571	327	355	382	416	481	595	707	878	988	1147	1211
API 580	419	490	565	645	778	1061	1288	1651	1844	2136	2250
API 577	129	148	161	182	216	283	337	436	484	543	573
QUTE	241	269	286	327	339	323	343	373	385	424	385
QUSE				18	21	23	27	35	41	55	61
QUPA				43	56	62	85	111	132	175	198
SI - FE					33	129	179	294	463	732	850
API 1169							30	102	158	522	1357
SI-RE									4	16	33
ACP										3	7
SIEE											1
TOTAL	23863	25335	27279	28725	30721	32547	34961	38449	41,325	44,463	45,590

We have seen a decline in the number of new applications. In our cornerston programs (510, 570, and 653) we have seen a decrease by about 40% from the same time last year. Also, at this time, we see a decrease specifically in the number of 510 certifications in circulation (see highlight above).

Certified Inspectors Worldwide

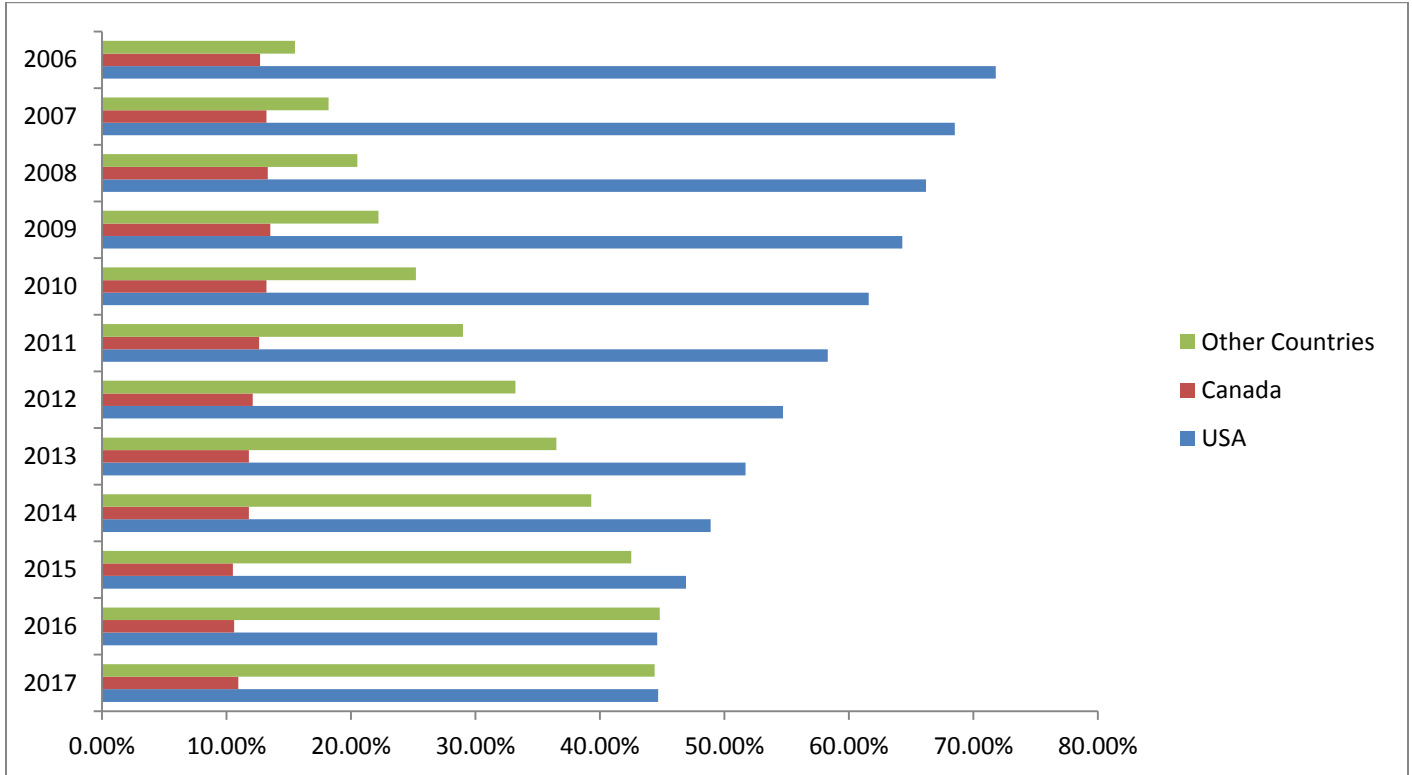


Worldwide Certified Inspectors (Top 10)

Top 10 Countries	Certified Individuals ▼	%GT Certified Individuals
United States	11953	44.66%
Other	6098	22.79%
Canada	2930	10.95%
South Korea	1471	5.50%
United Arab Emirates	850	3.18%
India	807	3.02%
Malaysia	676	2.53%
United Kingdom	505	1.89%
Singapore	503	1.88%
Qatar	492	1.84%
Egypt	477	1.78%
Total	26762	100.00%

ICP currently has over 26,500 inspectors in 127 countries.

Percentage Breakdown of Certified Inspectors



Note: 2017 numbers are as of Q1

Year	USA	Canada	Other countries
2006	5350	949	1155
2007	5598	1079	1489
2008	5964	1196	1842
2009	6495	1358	2243
2010	6846	1468	2807
2011	7408	1605	3688
2012	7934	1761	4820
2013	8483	1936	5979
2014	8984	2165	7221
2015	10137	2277	9180
2016	11065	2638	11112
2017	11953	2930	11879

Over time, we see that the number of certificates issued in our foreign countries has grown. They currently almost match the number of certificates held in the U.S.

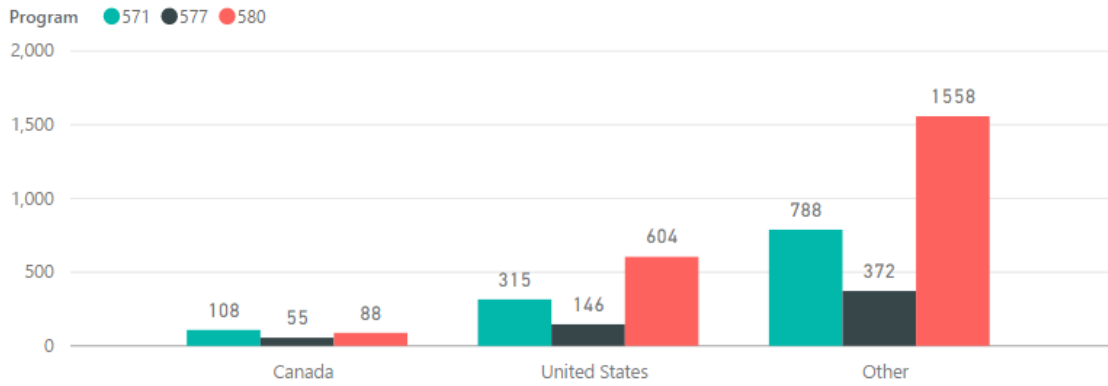
Global Certificate Distribution (Total by Country)



Top 10 Countries and Others Certificates Distribution

Top 10 Countries (Certificates)	Count of Certificates ▼	%GT Count of Certificates
United States	20900	45.84%
Other	8227	18.05%
Canada	4757	10.43%
Kingdom of Saudi Arabia	3110	6.82%
South Korea	1826	4.01%
United Arab Emirates	1686	3.70%
India	1243	2.73%
Qatar	1085	2.38%
Malaysia	1040	2.28%
Egypt	943	2.07%
United Kingdom	773	1.70%
Total	45590	100.00%

Breakdown of Specialized Programs

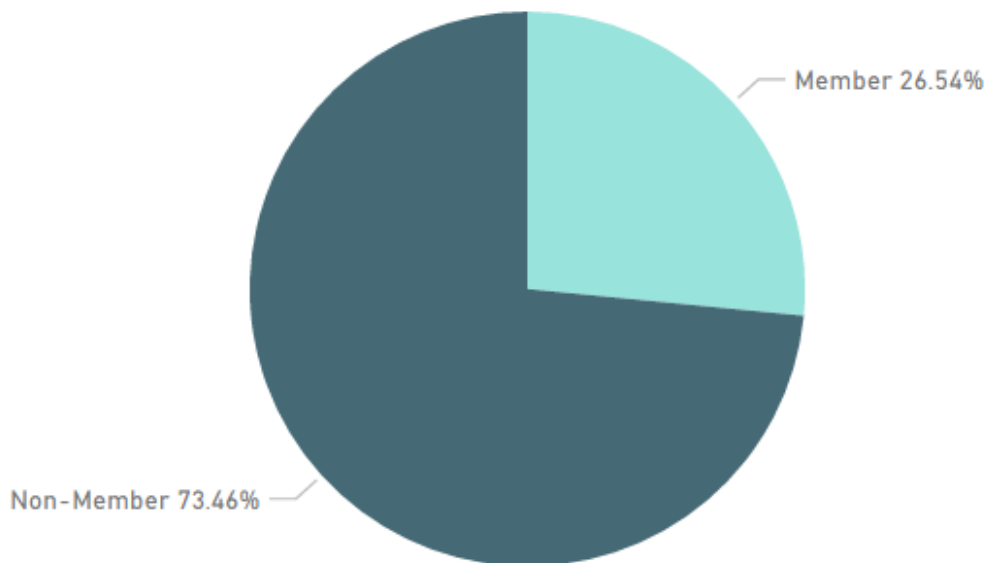


571, 577 and 580 Global Count

US, Canada & Foreign	571	577	580	...
Canada	108	55	88	251
United States	315	146	604	1065
Other	788	372	1558	2718
Total	1211	573	2250	4034

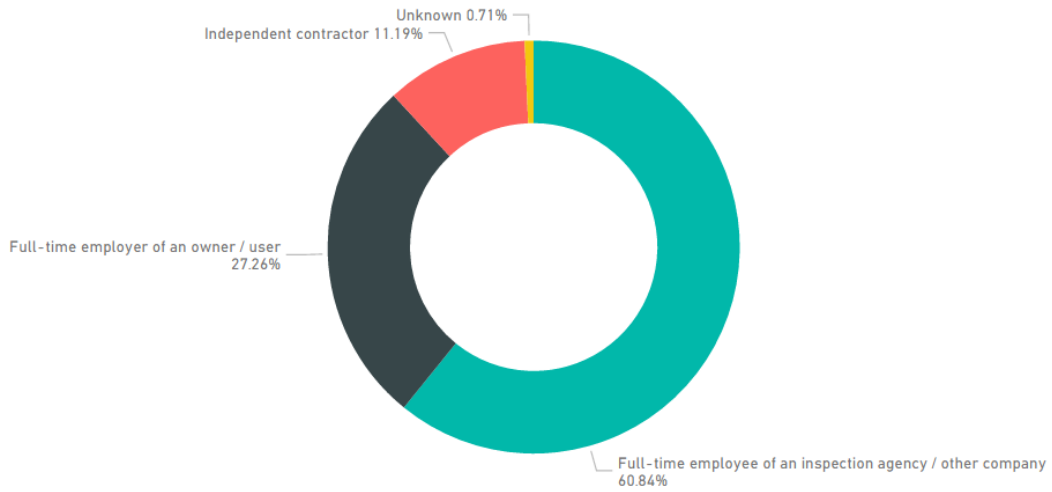
Member vs. Non-Member

Certified Individuals by Member Type

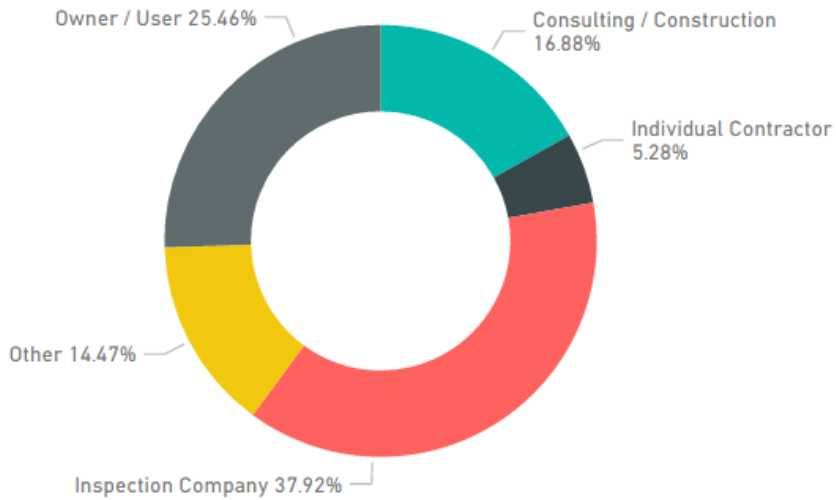


Demographic Breakdown of Certified Inspectors

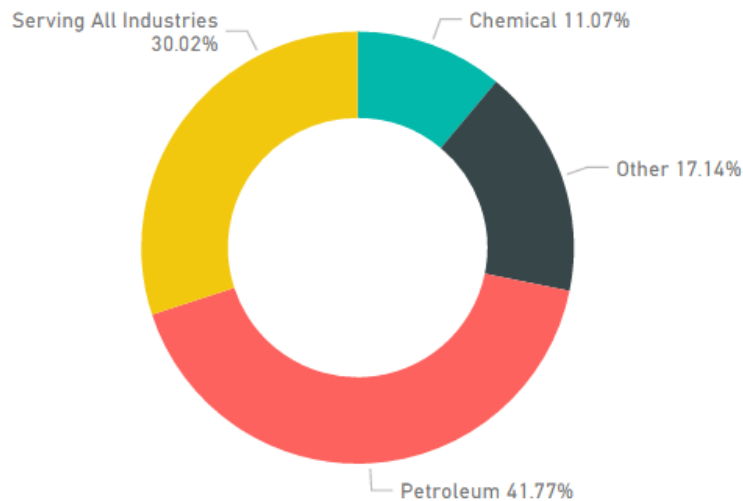
Certified Individuals by Employment Status



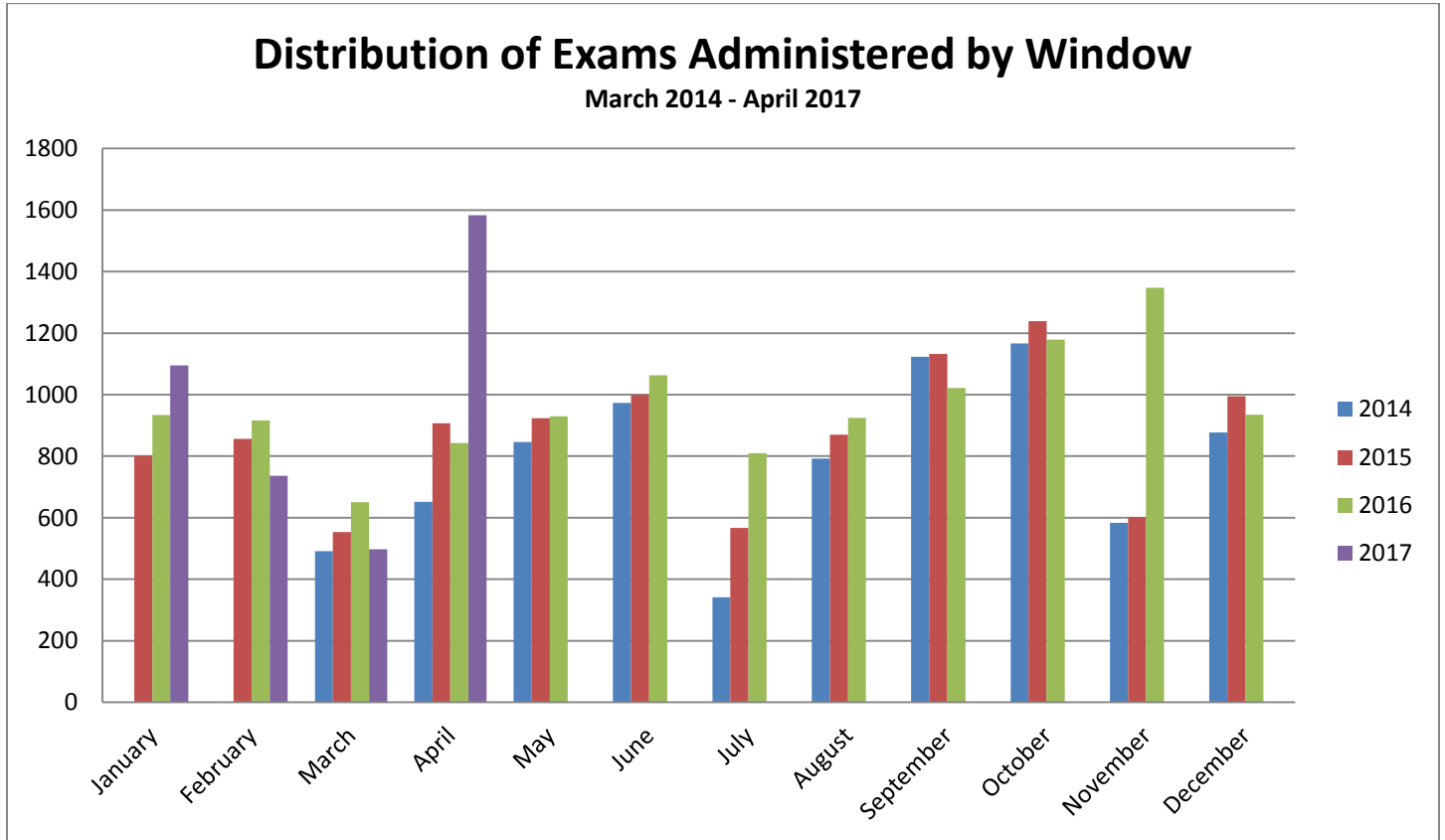
Certified Individuals by Organization Type



Certified Individuals by Industry Served

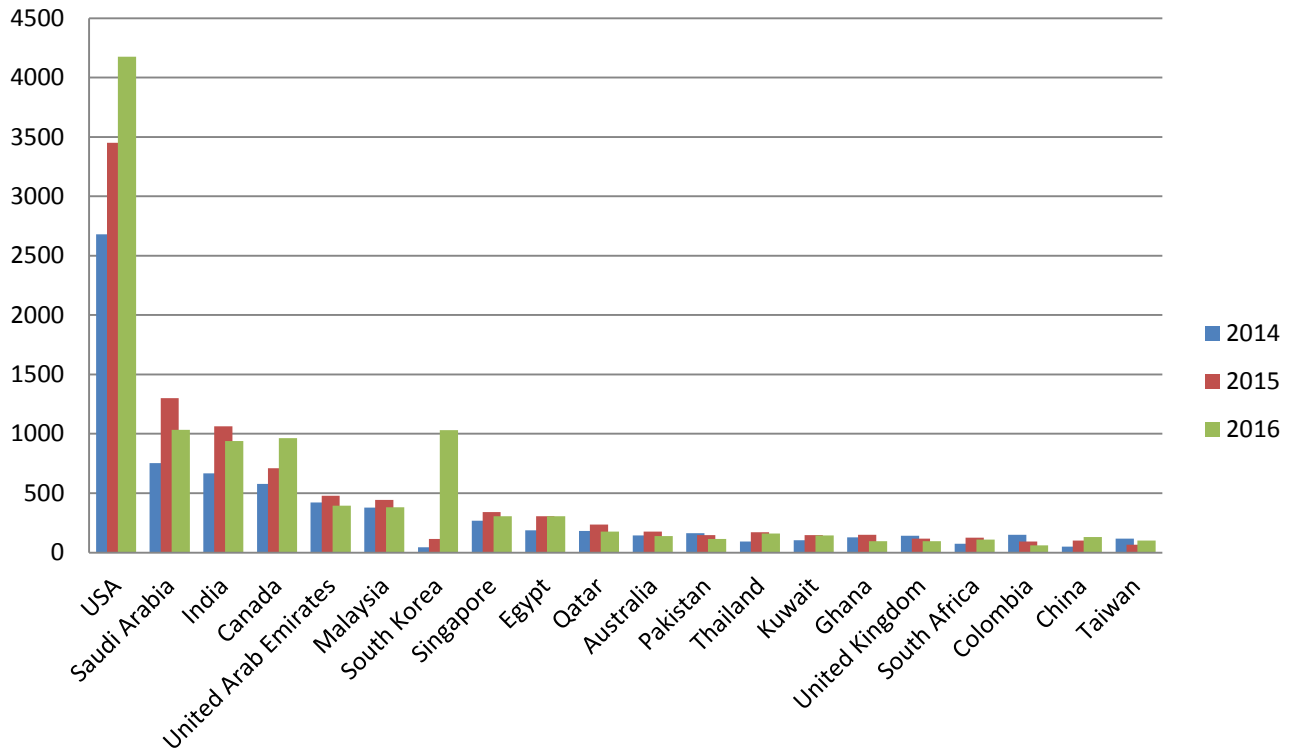


Breakdown of Exams Administered



Year	Exams Administered
2014	7,845
2015	10,445
2016	11,555
2017 (Q1)	3,911

Top 20 Countries by Exams Administered 2014-2016



Between 2014 and 2016, ICP has administered 29,845 exams in 72 different countries. We have utilized 321 of the over 500 Prometric testing centers around the world.

Above is a chart that shows the top 20 countries by growth since the introduction of computer based testing centers in 2014. As you can see, over time, 27,919 of our exams were delivered in those top 20 countries.

Country Top 20	Total
USA	10306
Saudi Arabia	3086
India	2670
Canada	2251
United Arab Emirates	1293
Malaysia	1205
South Korea	1190
Singapore	916
Egypt	800
Qatar	594
Australia	458
Pakistan	425
Thailand	423
Kuwait	394
Ghana	374
United Kingdom	354
South Africa	309
Colombia	304
China	284
Taiwan	283
Total	27919

Historical
Exam Performance

API 510 - Pressure Vessel Inspectors

Year	Exam Administration	CANDI-DATES	PASS	FAIL	PASS %	Pass Point
2010	June	678	357	321	51.7	109
	September	344	201	143	58.4	109
	December	651	342	309	52.5	110
2011	June	742	392	350	52.8	108
	September	440	216	224	49.1	108
	December	833	445	388	53.4	109
2012	June	988	554	434	56.1	109
	September	634	337	297	53.2	109
	December	795	485	310	61.1	90*
2013	June	960	559	401	58.2	90
	September	603	341	262	56.6	90
	December	928	521	407	56.1	86
2014	May	972	530	442	54.5	85
	September	1194	675	519	56.5	85/86
2015	January	875	494	281	56.5	85/86
	May	1048	582	466	55.5	85/86
	September	1208	743	506	61.5	85/86
2016	January	1015	626	389	61.7	85/86
	May	909	541	368	59.4	87/88
	September	1020	607	413	59.5	87/88
2017	January	692	438	254	63.2	87/88

API 653 - Aboveground Storage Tanks Inspectors

Year	Exam administration	CANDIDATES	PASS	FAIL	PASS %	PASS POINT
2010	March	473	274	199	57.9	103
	September	492	300	192	61.0	103
2011	March	586	319	267	54.4	101
	September	660	332	328	50.3	101
2012	March	683	383	300	56.1	105
	September	691	419	272	60.6	107
2013	March	644	364	280	56.5	86
	September	645	381	264	59.1	86
2014	March	462	259	203	56.1	89
	July	329	197	132	60.0	89
	November	540	308	232	57.0	89
2015	March	464	260	204	56.0	89
	July	438	272	166	62.1	89
	November	460	217	243	47.2	90/87
2016	March	493	272	221	55.2	90/87
	July	449	225	224	50.1	90/87
2017	March	394	212	182	53.8	91

API 570 - Piping Inspectors

Year	Exam administration	CANDIDATES	PASS	FAIL	PASS %	PASS POINT
2010	June	815	428	387	52.5	107
	September	351	178	173	50.7	107
	December	735		360	51.0	110
2011	June	882	487	395	55.2	108
	September	454	224	230	49.3	108
	December	981	526	455	53.6	110
2012	June	1002	506	496	50.5	110
	September	732	353	379	48.2	111
	December	784	366	418	46.7	86*
2013	June	1078	556	522	51.6	87
	September	730	349	381	47.8	87
	December	941	527	414	56.0	90
2014	June	1133	554	579	48.9	90
	October	1107	548	559	49.5	90
2015	February	1070	517	537	48.3.	89
	June	1208	672	536	55.6	89
	October	1318	759	721	57.6	89/90
2016	February	1100	599	501	54.5	89/90
	June	1000	546	454	54.6	89/90
	October	1180	707	473	59.9	89/90
2017	February	742	410	332	55.2	91/92

API UT Examiners

Year	Session #	Exam administration	CANDI-DATES	PASS	FAIL	PASS %
2013	44	January	6	4	2	
	45	January	17	9	8	
	46	February	6	3	3	
	47	February	20	15	5	
	48	March	6	2	4	
	49	May	18	10	8	
	50		6	5	1	
	51		24	15	9	
	52	July	16	9	7	
	53	August	13	10	3	
	54	September	18	10	8	55.6
	55	November	18	10	8	55.6
2014	56	January	15	11	4	
	57	March	5	0	5	
	58	May	19	12	7	
	59	July	25	11	14	
	60	September	18	11	7	
	61	November	20	13	7	65
2015	62	January	10	5	5	
	63	February I	8	4	4	
	64	February II	4	1	3	
	65	March	24	17	7	70.8%
	66	May	27	23	4	85.2
	67	July	10	7	3	70
	68	August	13	10	3	76.9
	69	September	6	4	2	66.7
	70	October	7	5	2	71.4
	71	November	17	12	5	70.6
	72	December	4	1	3	25.00
2016	74	January	15	10	5	66.67
	76	March	29	22	7	75.86
	77	June	30	17	13	56.67
	78		3	2	1	66.67
	79		22	12	10	54.55
	80	September	15	10	5	66.67
	81	November	17	10	7	58.82
2017	82	January	16	10	6	62.50
	83	March	20	12	8	60

API UT Examiners (Sizing)

Year	Exam administration	CANDI-DATES	PASS	FAIL	PASS %
2007	pilot		3		
2009	December	11	1	10	9
2010	No applications				
2011	July	5	3	2	60
	November	4	2	2	50
2012	March	3	1	2	
	June	1	0	1	0
	November	1	0	1	
2013	March	6	3	3	
	September	7	5	2	
	November	6	2	4	33.3
2014	January	1	1	0	
	July	3	2	1	
	September	1	1	0	
2015	January	3	2	1	
	February I	15	1	14	
64	February II	-	-	-	
65	March	9	2	7	22.2
66	May	4	3	1	75
67	July	9	3	6	33.3
68	August	2	0	2	0
69	September	4	1	3	75
71	November	4	0	4	0
72	December	2	0	2	0
2016, 74	January	9	5	4	55.56
76	March	8	1	7	12.5
77	June	10	4	6	40.00
78		7	2	5	28.57
79		15	6	9	40
80	September	6	2	4	33.33
81	November	11	8	3	72.73
2017, 82	January	6	2	4	33.33
83	March	3	1	2	33.33

API UT Examiners (Phased Array)

Year	Exam administration	CANDI-DATES	PASS	FAIL	PASS %
2007	pilot		3		
2009	December	11	1	10	9
2010	No applications				
2011	July	5	3	2	60
	November	4	2	2	50
2012	March	3	1	2	
	June	1	0	1	0
	November	1	0	1	
2013	March	6	3	3	
	September	7	5	2	
	November	6	2	4	33.3
2014	January	1	1	0	
	July	3	2	1	
	September	1	1	0	
2015	January	3	2	1	
	February I	15	1	14	
64	February II	-	-	-	
65	March	9	2	7	22.2
66	May	4	3	1	75
67	July	9	3	6	33.3
68	August	2	0	2	0
69	September	4	1	3	75
71	November	4	0	4	
72	December	2	0	2	
2016, 74	January	9	5	4	80.00
76	March	8	1	7	71.43
77	June	13	12	1	92.31
78		3	2	1	66.67
79		18	11	7	61.11
80	September	5	4	1	80
81	November	10	8	2	80
2017, 82	January	11	11	0	100
83	March	20	15	5	75

API TES – Tank Entry Supervisors

YEAR	EXAM ADMINISTRATION	CANDIDATES	PASS	FAIL	PASS %	PASS POINT (OUT OF 120)
2010	March	46	26	20	56.5	86
	September	82	47	35	57.3	86
2011	March	139	62	77	44.6	86
	September	121	47	74	38.8	86
2012	March	108	62	46	57.4	79
	September	105	67	38	63.8	79
2013	March	70	38	32	54.3	75
	September	51	28	23	54.9	75
2014	March	48	24	24	50	75
	July	23	10	13	43.5	75
	November	68	47	21	69.1	75
2015	March	27	12	15	44.4	75
	July	34	28	6	82.4	75
	November	27	19	8	70.4	76/74
2016	March	19	12	7	63.2	76/74
	July	22	13	9	59	76/74
	November	26	19	7	73.1	76/74
2017	March	16	12	4	75	76/74

API 936 - Refractory Personnel

Year	Exam administration	CANDIDATES	PASS	FAIL	PASS %	PASS POINT (out of 75)
2010	March (2)	82	53	29	64.6	51
	May	9	8	1	89.0	51
	sept	77	53	24	68.8	51
2011	February	12	9	3	75	51
	June	91	58	33	63.7	51
	December	154	109	45	70.8	51
2012	June	117	87	30	74.4	51
	December	141	102	39	72.3	51
2013	June	103	70	33	68.0	51
	December	159	103	56	64.8	51
2014	April	57	34	23	59.6	51
	August	144	98	46	68.0	51
	December	118	78	40	66.1	51
2015	April	95	67	25	72.8	51
	August	99	74	25	74.7	51
	December	145	112	33	77.2	51
2016	April	89	67	22	75.3	51
	August	128	88	40	68.8	51
	December	134	99	35	73.9	51

API 571 - Corrosion and Materials Professional

Year	Exam administration	CANDIDATES	PASS	FAIL	PASS %	PASS POINT (out of 70)
2010	March	75	34	41	45.3	49
	September	84	43	41	51.2	49
2011	March	89	34	55	38.2	49
	September	86	27	59	31.4	49
2012	March	102	28	74	27.5	49
	September	127	37	90	29.1	49
2013	March	109	36	73	33.0	49
	September	193	69	124	35.8	49
2014	April	159	97	62	61.0	49
	August	174	74	100	42.5	49
	December	251	105	146	41.8	49
2015	April	197	85	112	43.1	49
	August	240	103	137	42.9	49
	December	258	112	146	43.4	49
2016	April	179	78	101	43.6	49
	August	191	86	105	45	49
	December	223	82	141	36.8	49
2017	April	217	72	145	33.2	49

API 580 - Risk Based Inspection Professional

Year	Exam administration	CANDIDATES	PASS	FAIL	PASS %	PASS POINT (out of 70)
2010	March	95	37	58	39.0	49
	September	137	55	82	40.2	49
2011	March	140	49	91	35.0	49
	September	147	59	88	40.1	49
2012	March	200	70	130	35.0	49
	September	244	90	154	39.7	49
2013	March	238	91	147	38.2	49
	September	319	138	181	43.3	49
2014	April	316	168	148	53.2	49
	August	300	159	141	53.0	49
	December	405	192	213	47.4	49
2015	April	357	178	179	49.9	49
	August	371	205	166	55.3	49
	December	404	205	199	50.7	49
2016	April	301	154	147	51.1	49
	August	274	88	181	32.1	49
	December	317	170	147	53.6	49

API 577 - Welding Inspection and Metallurgy Professional

Year	Exam administration	CANDIDATES	PASS	FAIL	PASS %	PASS POINT (out of 70)
2010	March	21	17	4	81.0	49
	September	21	12	9	57.1	49
2011	March	33	19	14	57.6	49
	September	29	14	15	48.3	49
2012	March	32	20	12	62.5	49
	September	24	15	9	62.5	49
2013	March	38	21	17	55.2	49
	September	54	36	18	66.7	49
2014	April	79	42	37	53.2	49
	August	67	29	38	43.3	49
	December	104	54	50	41.9	49
2015	April	93	51	42	54.8	49
	August	102	55	47	53.9	49
	December	91	52	39	57.1	49
2016	April	179	78	101	43.6	49
	August	54	27	27	50	49
	December	71	44	27	62	49
2017	April	38	21	17	55.3	49

API SIFE - Source Inspector Fixed Equipment

Year	Exam administration	CANDIDATES	PASS	FAIL	PASS %	PASS POINT (out of 100)
2013	November	60	33	27	55	70
2014	April	61	38	23	62.3	70
	August	109	58	51	53.2	70
	December	86	50	36	58.1	70
2015	April	98	56	42	57.1	70
	August	93	62	31	66.7	70
	December	228	171	57	75	70
2016	April	173	125	48	72.2	70
	August	236	154	82	65.3	70
	December	170	103	67	60.6	70
2017	March	60	41	19	68.3	70

API SIRE - Source Inspector Rotating Equipment

Year	Exam administration	CANDIDATES	PASS	FAIL	PASS %	PASS POINT (out of 100)
2015	December	9	4	5	44.4	70
2016	April	15	7	8	46.7	70
	August	25	6	19	24	70
	December	30	10	20	33.3	70
2017	March	22	7	15	31.8	70

API 1169 - Pipeline Inspector

Year	Exam administration	CANDIDATES	PASS	FAIL	PASS %	PASS POINT
2014	November	67	35	23	47.8	68
2015	March	76	41	35	53.9	68
	July	69	32	37	46.4	68
	November	102	58	44	56.9	68
2016	March	135	98	37	72.6	68
	June Special	47	46	1	97.9	68
	July	325	266	59	81.9	68

Miscellaneous Statistics

1. Number of registered individuals in the portal continues to rise. We stand at over 49,000 users.
2. Applicants are utilizing over 300 of Prometric's sites around the world.
3. Still have 1,014 inspectors who have not activated.